

# NOTE: FOR REFERENCE ONLY. USE TEMPLATE INCLUDED WITH THE WALL ENTRY PET DOOR

## “Inside (Interior) Template” Wall Entry Pet Door

## “Outside (Exterior) Template” Wall Entry Pet Door

**As with any home improvement project, if you do not have the tools or skills to properly install your pet door, we suggest using a professional handyperson or licensed contractor.**

**IMPORTANT!!! Whenever Drilling And Cutting Through Walls, Extreme Caution Should Always Be Taken To Avoid Gas, Electric & Plumbing Lines.**

### TOOLS REQUIRED FOR INSTALLATION:

- Tape Measure • Stud Finder • Level • Felt Tipped Marker • Utility Knife • Electric Drill with Integrated Top Level
- 3/16”, 1/4” and 3/8” Regular Drill Bits • 3/16”, 1/4” and 3/8” Masonry Drill Bits • Electric Saw with Appropriate Blades • Electric Screwdriver with Phillips Bit • Hammer or Rubber Mallet • Safety Goggles

**BE SURE TO READ ALL INSTRUCTIONS CAREFULLY BEFORE INSTALLATION**

**STEP 1** – After removing the pet door from box, separate the two door frames and remove the die cut “Inside Template”. NOTE: The inside door half contains the cardboard “box guide”. Leave this in place.

**STEP 2** – Using a stud finder, locate wall studs and position inside template as close as possible to center of wall studs (wall studs are typically 16” apart, center-to-center). Measure your pet from floor to shoulder and add 2”. Transfer and mark this measurement to the inside wall at the desired placement for your pet door and align top of the “Inside Template” to this mark. Level the “Inside Template” and tape in place.

**STEP 3** – With a felt tipped marker, draw a line all around the inner edges of the “Inside Template” and mark the four 3/8” diameter corner starter holes at each corner then drill the 3/8” diameter corner starter holes at each corner. Remove the template when completed.

**STEP 4** – Next, making sure the electric saw is flat and level against the wall, carefully cut out the inside wall opening using the appropriate blade. When completed, remove the cutout drywall and any interior wall insulation.

**STEP 5** – Place the inside door half (with the cardboard “box guide”) into the opening of the inside wall. Level the frame and hold securely. NOTE: We recommend using an extra person for this step.

**STEP 6** – Next, lift the flap (or you can remove the flap completely) and gently push the “box guide” forward until it touches the inside surface of your exterior wall.

**STEP 7** – The “box guide” has a 3/8” diameter center hole. Using this hole as a guide and using a 3/8” diameter masonry bit, drill from the inside door half through to the outside wall. NOTE: Keep the drill level and straight. When completed, remove the inside door half and then carefully remove the box guide from the frame.

**STEP 8** – Now move to the outside and locate the 3/8” diameter center hole and place the 3/8” dowel (supplied) into the hole. Next, locate the “Outside Template” on the outside wall and line-up by placing the 3/8” diameter center hole in the “Outside Template” over the protruding 3/8” dowel. Next, level and tape the “Outside Template” in place.

**STEP 9** – With a felt tipped marker, draw a line all around the “Outside Template” onto the outside wall. Next, using the targets on the paper template as a guide, drill the four 3/8” diameter corner starter holes at each corner through the paper template using an electric drill with a 3/8” masonry bit. Remove the template when completed.

**STEP 10** – Next, making sure the electric saw is flat and level against the wall, carefully cut out the outside wall opening using the appropriate blade. When completed, remove the cutout wall material.

**STEP 11** – Place the outside door half into the opening and push through then have another person on the inside to position the inside door half and push the two frames together until both inside and outside frames are flush on both sides.

**STEP 12** – Level the outside door frame and hold securely in place. Using the outside door frame holes as a guide, drill a 3/16” pilot hole in each of the six holes.

**STEP 13** – Remove both inside and outside door frames. At this step, if you are attaching into stucco or cement on the outside wall, replace the outside frame and use the 6 blue masonry screws (supplied) to secure directly into the 3/16” pilot holes. NOTE: If you decide to use the plastic wall inserts and the #10 x 1” screws (supplied) you will need to open up the outside pilot holes to 1/4”. When completed, place a plastic insert in each hole and gently tap in place using a hammer or rubber mallet.

**STEP 14** – Replace the outside door frame back into the opening and secure using the #10 x 1” screws or the blue masonry screws (supplied). You may use a different type of inserts and fasteners if desired.

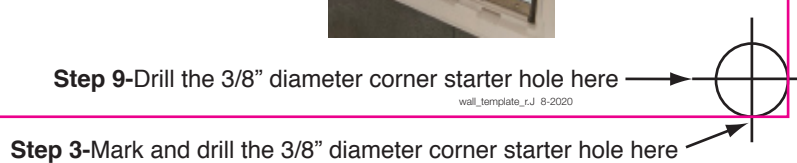
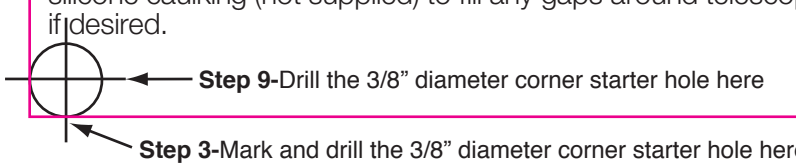
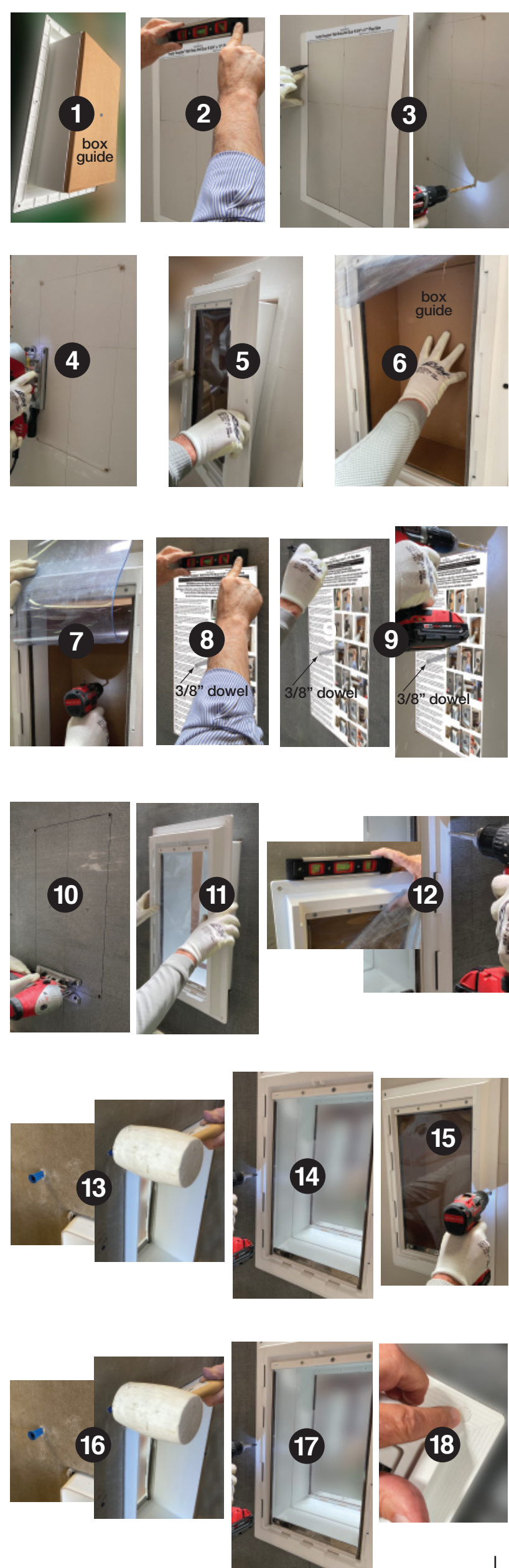
**STEP 15** – Moving to the inside, replace the inside door frame and hold securely in place. Using the inside door frame holes as a guide, drill a 3/16” pilot hole in each of the six holes.

**STEP 16** – Remove the inside door frame and drill a 1/4” hole at each of the inside door frame pilot holes. When completed, place a plastic insert (supplied) in each hole and gently tap in place using a hammer or rubber mallet.

**STEP 17** – Replace the inside door frame back into the opening and secure using the #10 x 1” screws (supplied). You may use a different type of inserts and fasteners if desired.

**STEP 18** – Finish the installation by pressing the frame screw caps (supplied) over the holes on the inside and outside frames. NOTE: Use silicone caulking (not supplied) to fill any gaps around telescoping edges if desired.

- Included In Box:**
- 3/8” Dowel
  - Blue Masonry Screws (6) and Blue Plastic Inserts (12)
  - #10x1” Frame Screws (12) and Frame Screw Caps (14)
  - 3/16” Masonry Drill Bit
  - Cardboard Box Guide
  - Slide
  - Wall Entry/Dual Flap Pet Door



wall\_template\_r\_j 8-2020

wall\_template\_r\_j 8-2020